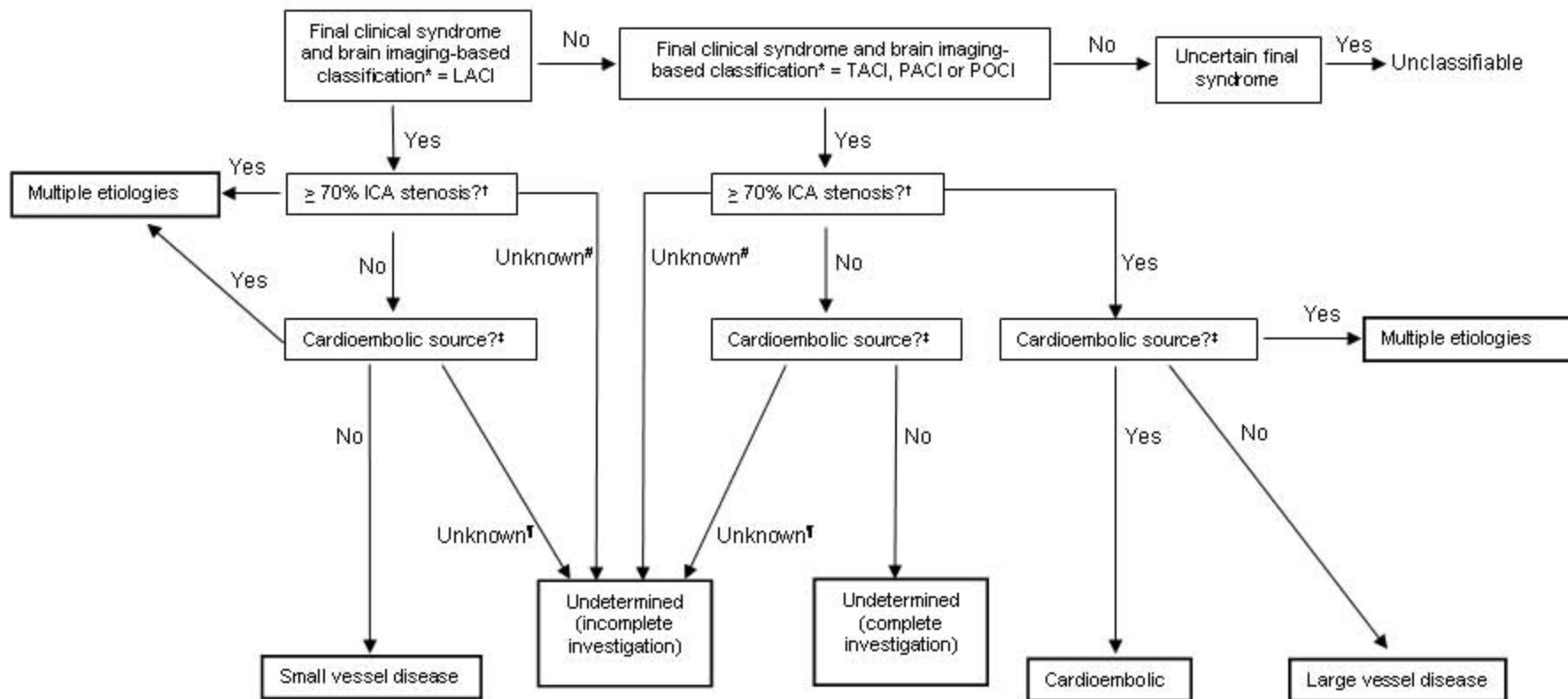


On-line figure. Modified TOAST algorithm used to assign etiological ischemic stroke subtypes



*LACI = lacunar infarction; PACI = partial anterior circulation infarction; TACI = total anterior circulation infarction; POCI = posterior circulation infarction

†Ipsilateral internal carotid artery stenosis. ‡Cardioembolic source defined as history of or post-stroke electrocardiogram (+/- echocardiogram) evidence of atrial fibrillation or cardiac valve disease. #Imaging of extracranial neck arteries not performed. ¶Appropriate cardiac investigation (electrocardiogram +/- echocardiogram) not performed in patients with no known history of atrial fibrillation.