



MSW

Repository Fringe 2018 – July 2-3, 2018

Pauline Crépel – Business Development Manager

My Science Work

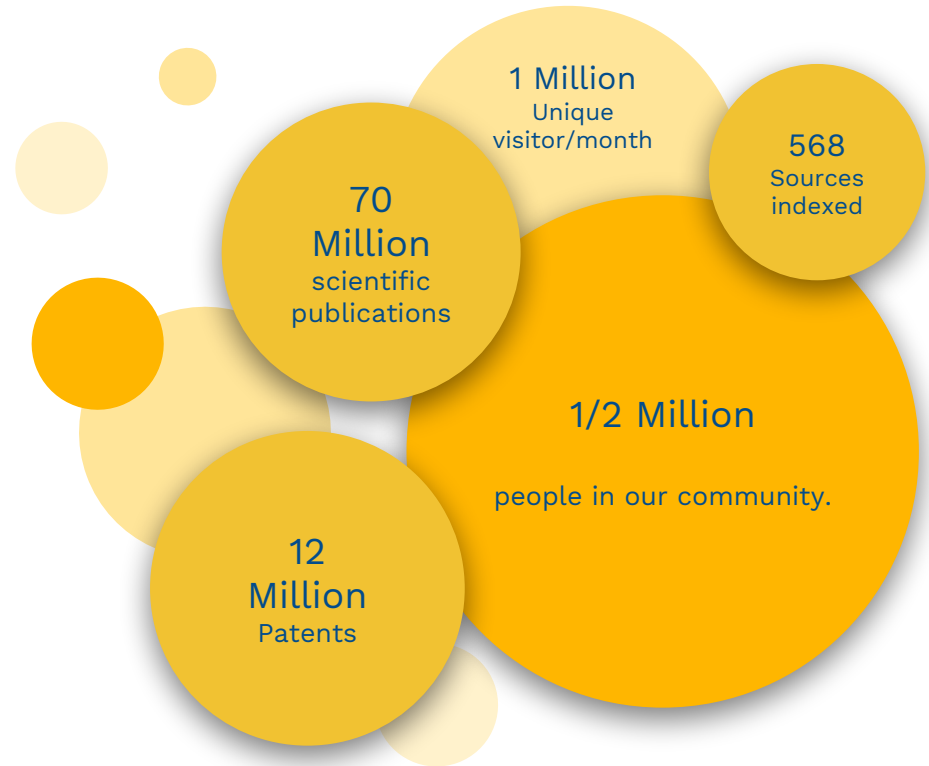
Our Story

Democratizing science

The idea came to the co-founder, Virginie Simon, during her PhD while developing nanotechnology designed for cancer therapy.

She realized that science should be more open and that scientists, publishers, and institutions need tools to help them access research results, accelerate research, and analyze data.

MSW



*Open repositories and open source ...
a happy marriage?*

Case Study :



Why use an Open Source Repo.? *MSW*

- Sharing the source code with the public is an important part of the open science movement.
- Free and available code allows the dev. community to suggest new features and continue improving the solution.
- Publishing open source guarantees sustainability of solution.

Why a new Open Source Repo.?

MSW

- Existing open source repositories were developed years ago and have yet to adapt to current data needs and challenges, and we want to promote open sciences.
- Open source is essential today for advancing innovative technology and staying at the forefront of the digital revolution.
- We choose technologies that match perfectly with data challenges (semantic web, files storage, UX/UI).
- Clear and organize code that could be easy to use, implement, and tailor and feature development

Why an **OPEN** repositories?

With the rise of the Semantic Web (Web 3.0), a large amount of data is now available from multiple processes:

- Automation of existing metadata/publications harvesting from partners (Orcid, CrossRef...) or open repositories (Pubmed, ArXiv...)
- Autocompletion of metadata fields to help researchers during their deposit workflow

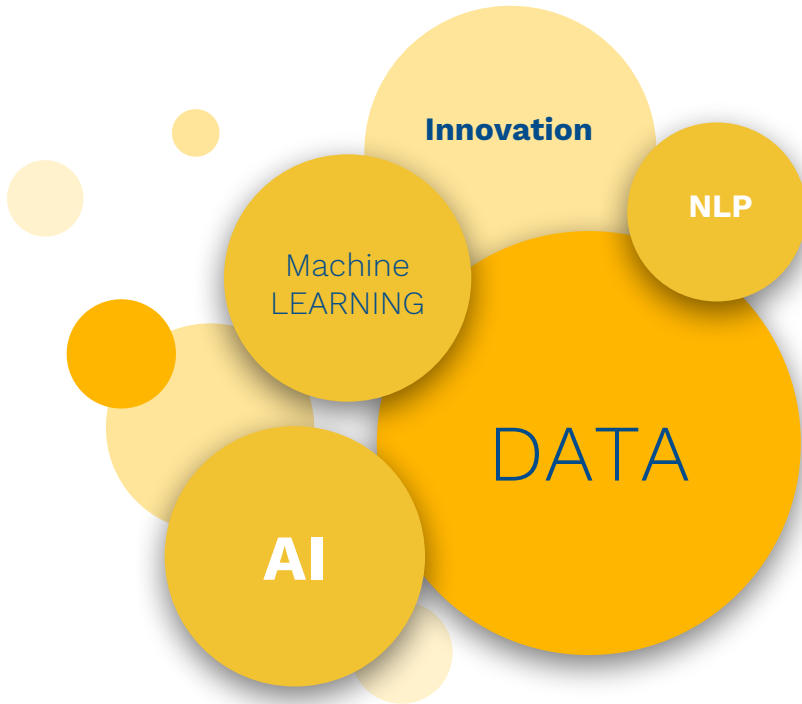
Why an OPEN repository?

Once your corpus of publications/metadata is built (clean, structured, enriched), you are ready to increase your scholarly results visibility:

- Searchable content adapted to Semantic Search Engine
- Interoperable with an API Store to import/export all kinds of data to/from any sources. Share your metadata in all other databases as: open repositories (Pubmed, RePEc, OpenAIRE, HAL...), internal database for analytics...

The product & technologies

MSW



- Development based on unique needs
- Open source
- Based on innovative and opens source technologies
- Flexible: data models and workflow customizable
- Interoperable: API Store to import/export all kind of data from/to any sources
- Design: Responsive/Reactive & widget based

The result: Polaris OS

The Open Repo we've developed is a combination of:

Enterprise Resource Planning (ERP)

- Integrate external streams
- Aggregate data under a common model
- Role & user management: defining fine-grained access to the platform on both back office & front office

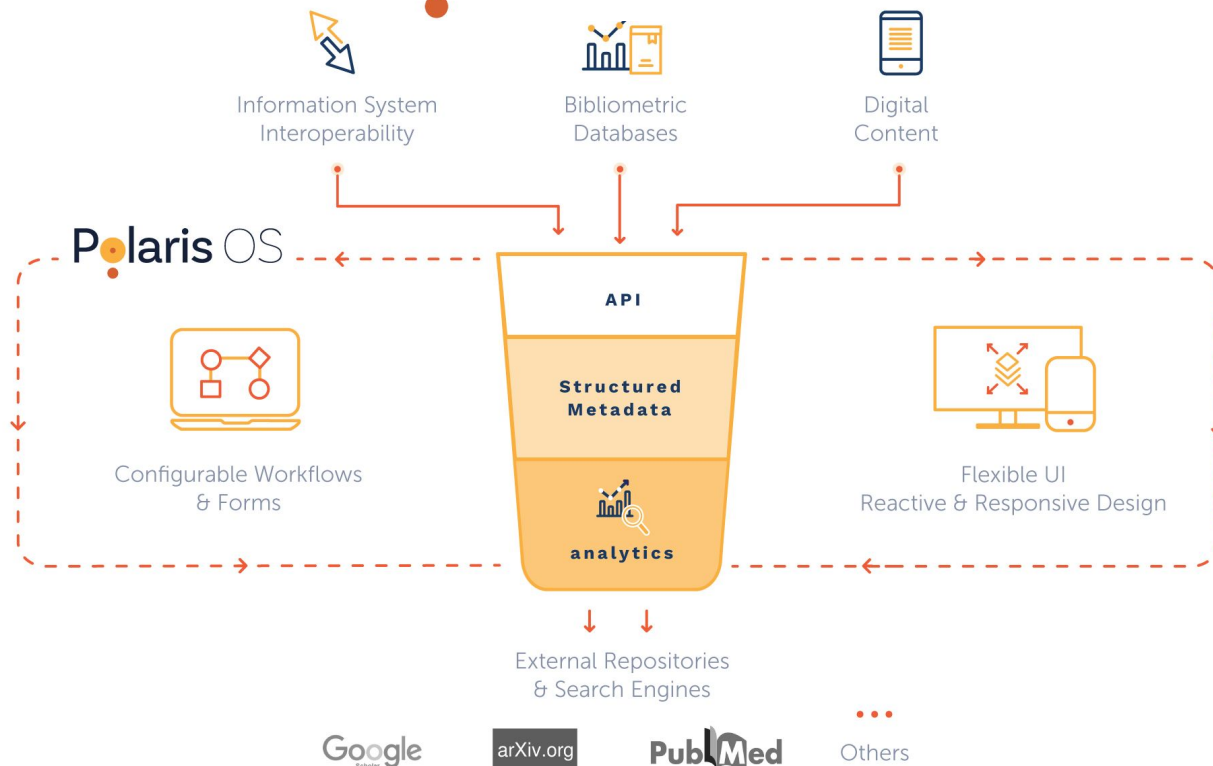
Extract Transform Load (ETL)

- Using pipeline to handle stream of data format, complete, filter, transform as well as validate an input.
- Data retrieved from a wide range of protocols including : ODBC (connection to relational databases), SOAP-XML, REST, SFTP ((secure) file transfer protocol).

Content Management System (CMS)

- Templates describe the way a page is organized (header, footer, horizontal or vertical menu...)
- Menus are customizable at any time
- Widget based solution: search, browse, show an image, feature a video

The result: Polaris OS



To conclude

- 👉 They say “Yes!”
- 👉 Not only a good marriage, a new paradigm.

Thanks!

Any questions?

You can contact me at pauline.crepel@mysciencework.com

+33 664 856 086